

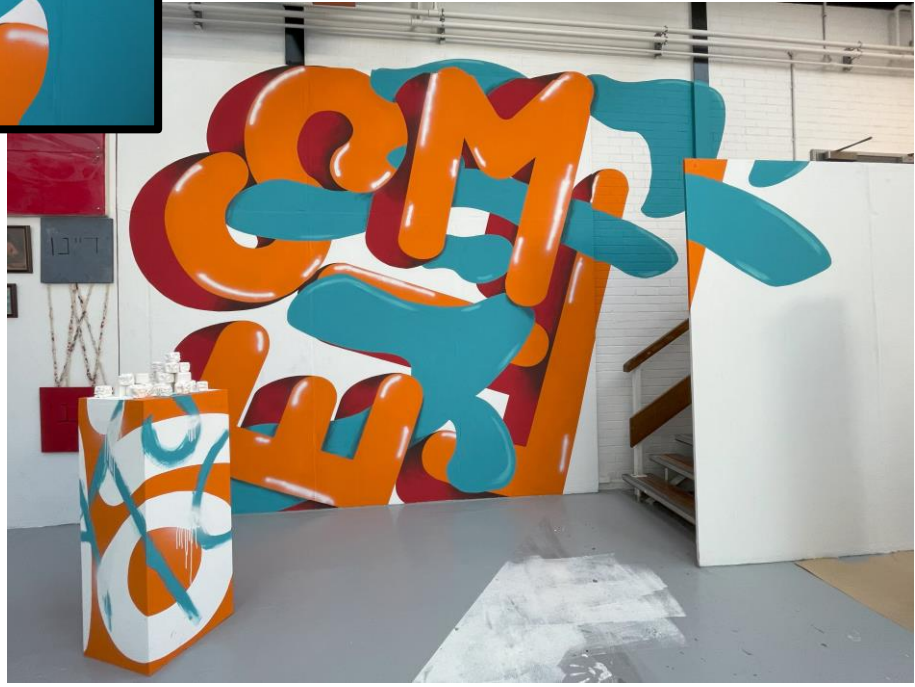
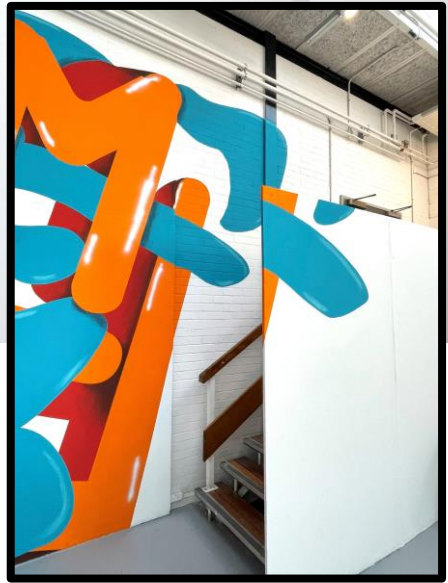
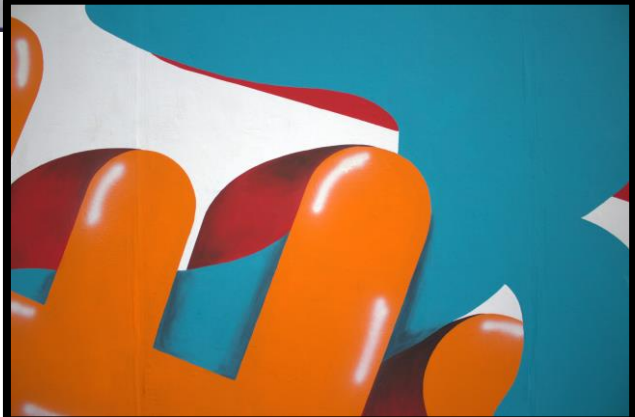
A stylized illustration of a plant stem with several blue, elongated, teardrop-shaped leaves. The stem and leaves are rendered in a dark blue color with a halftone dot pattern. The leaves are arranged in a vertical line, with some pointing upwards and others downwards. The background is white with a faint, light blue circular glow behind the text.

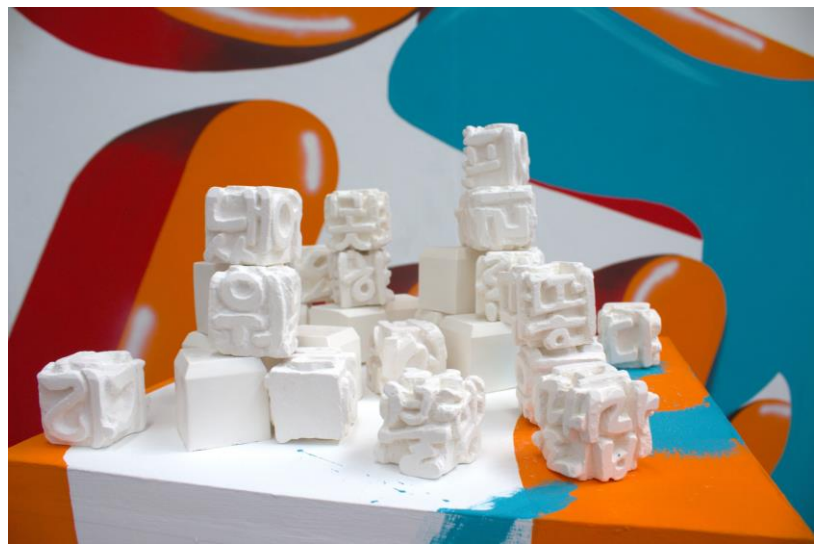
Daisy-Mai Hammond

Professional Practice
Portfolio



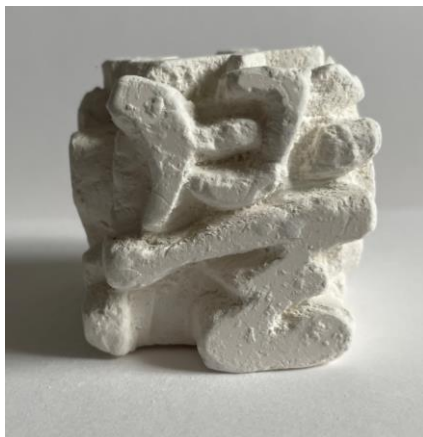
'Beautiful Smile' - Degree Show Installation, 2023- Emulsion on Wall Panel and Brick, 5.2m x 3.85m

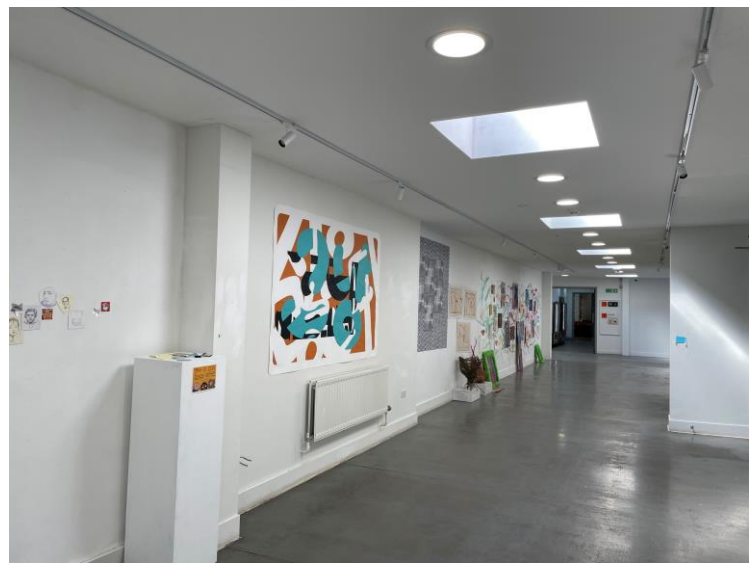




'Word Cubes', 2022-
Plaster of Paris, 2 inch x
2 inch

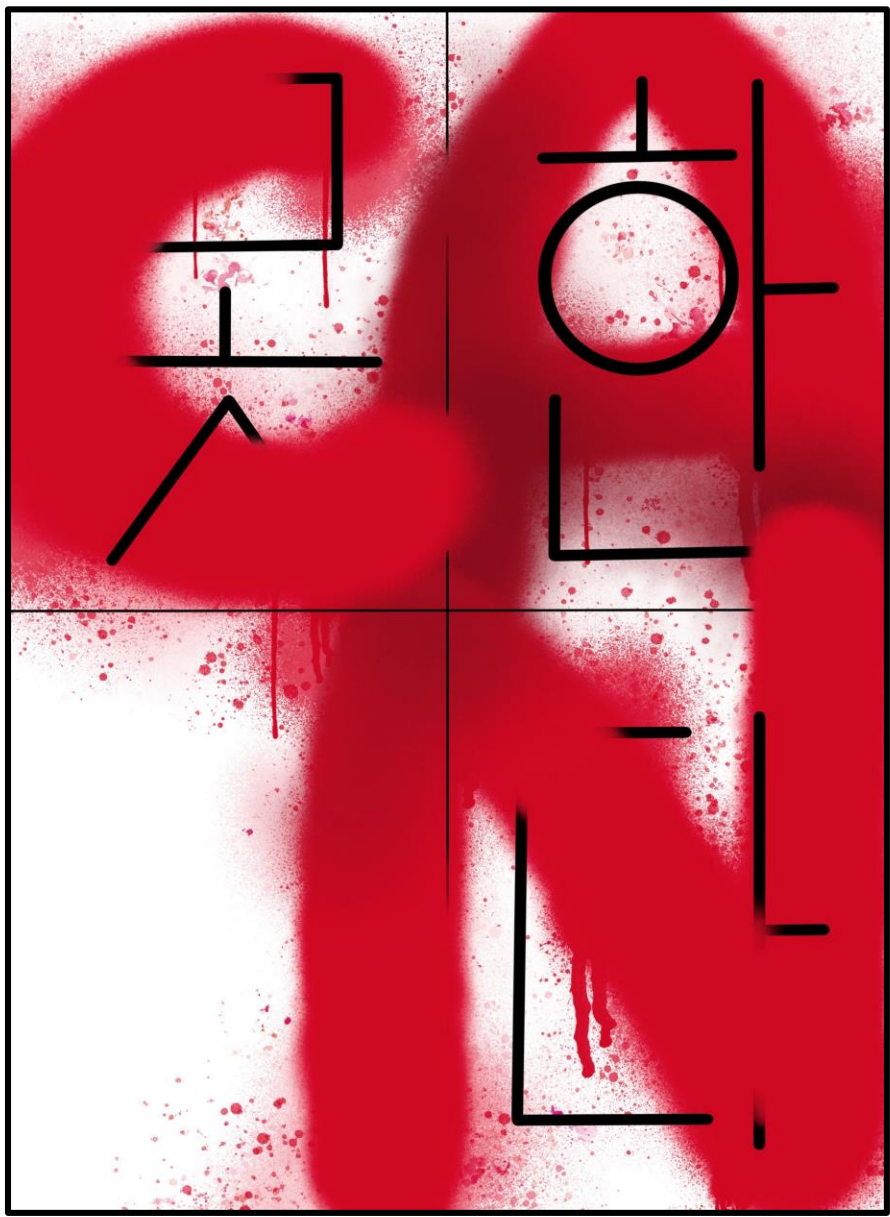
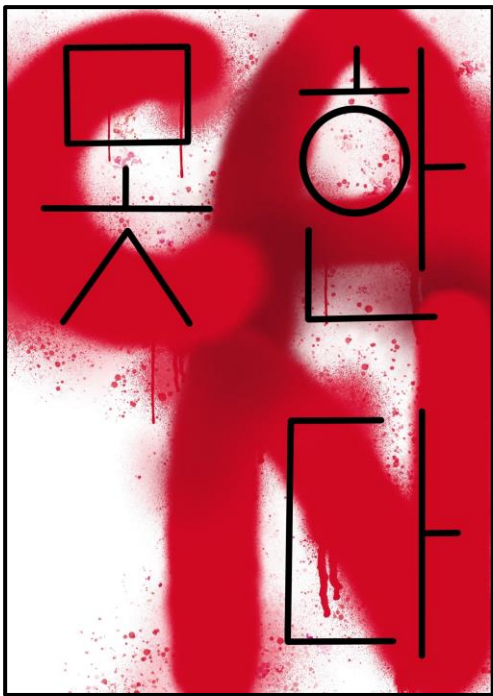
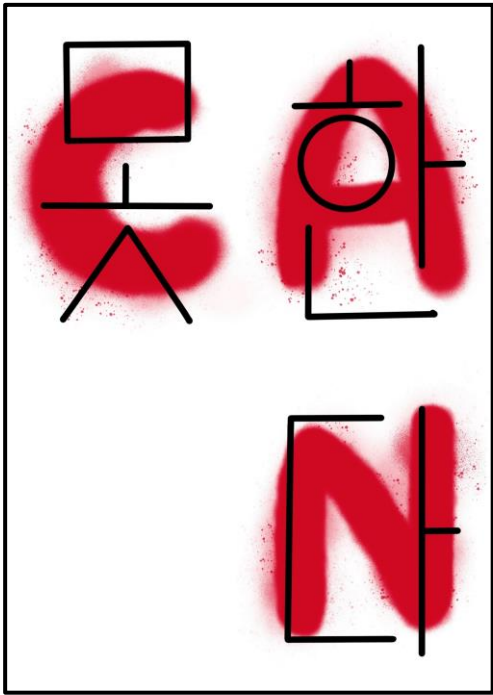
Cast plaster cubes
which are then
hand carved.





Top: '그냥', 2023- Emulsion paint on 140cm x 202cm Fabriano Paper
Bottom Left: Digital design, draft for paper mural
Bottom Right- Installation photograph

Investigating making a 'paper mural' which can be moved and re-seen.



'(못) Can', 2023- Digital Poster
Top and Bottom Left- Versions of '(못)
Can'

Sometimes I like leaving the images ambiguous, only seeing the images for what they are- unless you understand English and Korean. However sometimes I like to show the meanings: 'Can' meaning 'Can Do (something/ anything)', and '못한다' (mot-han-da) means 'Cannot do something'. Using opposites and differences, using the three letters of English and three syllables of Korean.

Mural inspired by old, gothic architecture, and modern geometric buildings and interventions.

Experimenting with the foreground and background in paintings, which play with the meanings extracted.



'Untitled', Year 1 Studio Space Mural, 2021- Emulsion on Plaster Board



Top Right- 'Fairy Lights in Still Life', 2021- Oil Paint on 30cm² canvas

Top Left – Painting focus

Bottom- Install Documentation

A product of my fascination with still life paintings. After arranging a still life display with traditional themes of 'memento mori', I created this wall installation which mixes the traditional- oil painting, with the modern- fairy lights and large ink sketch.

‘창덕궁 비원’ - Oil Paint on A1
Canvas



Oil Painting of the
Changdeok Palace Secret
Garden, Seoul, South
Korea.

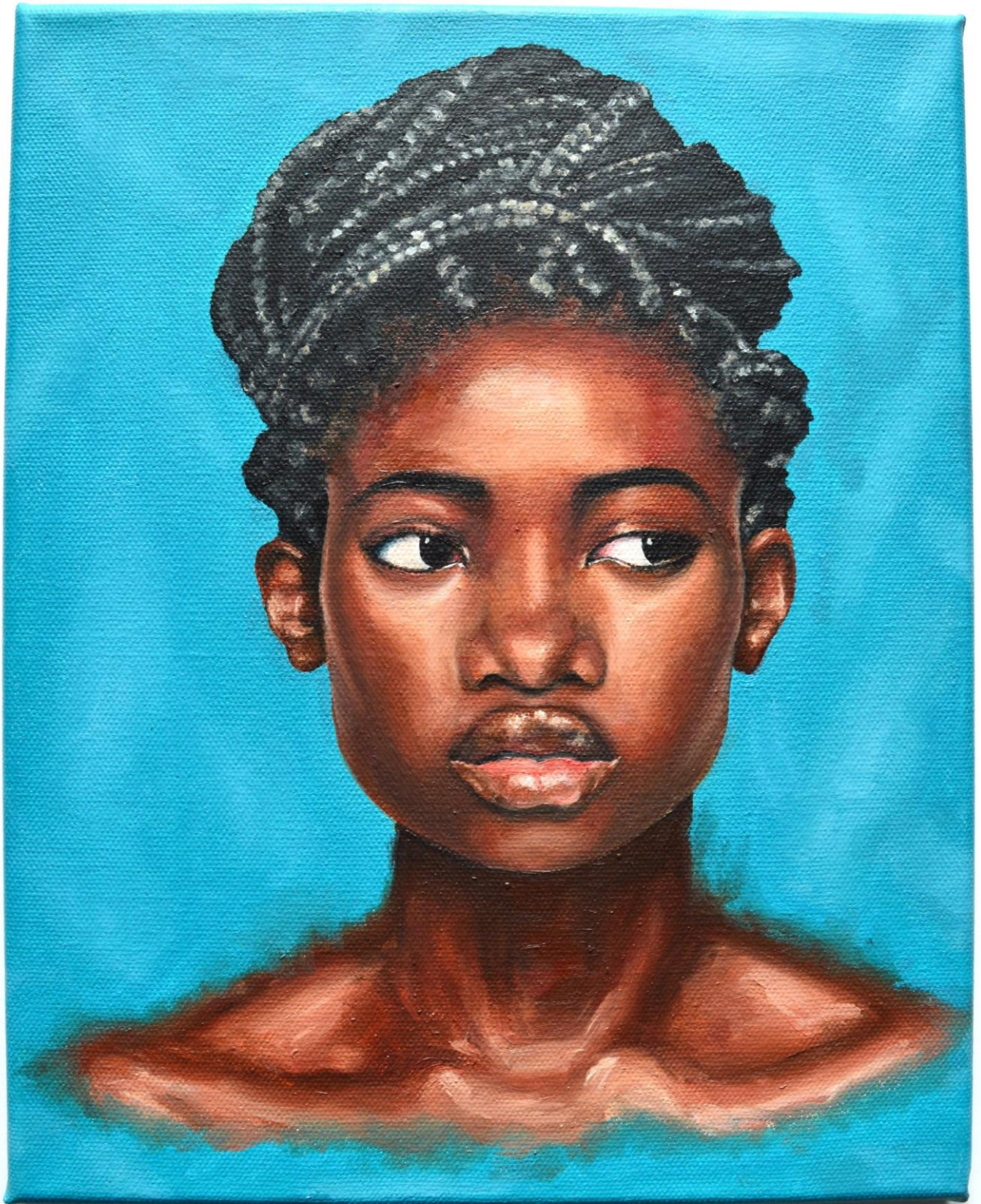
The feeling of nostalgia is
odd and interesting. I use
oil paint to try to capture
the image and moment,
forever failing and relying
on the nostalgia.





Glazed Ceramic Vase (Top)- 9cm x 9cm
Glazed Ceramic Bowl (Left)- 19cm x 16cm
2022, (approx.)

I took a ceramics course when attending Hanyang University in Korea. Being practical and decorative, these also hold many memories from the making process as well as my time in Korea.



'Blue Portrait', 2022
Oil Paint on Canvas

As well as looking at my own emotions and sense of nostalgia, portraiture allows me to explore facial expressions and how the viewer and I can perceive them.