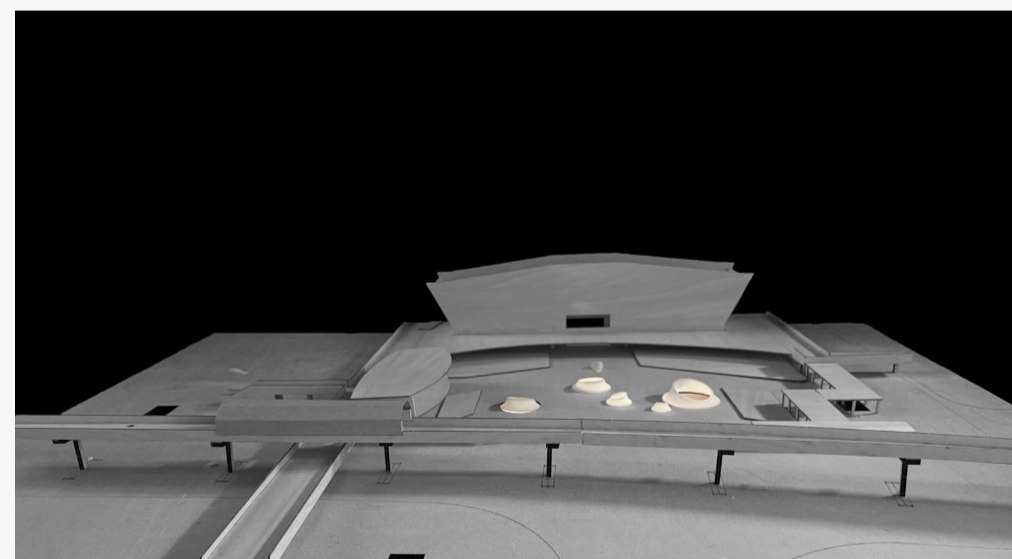
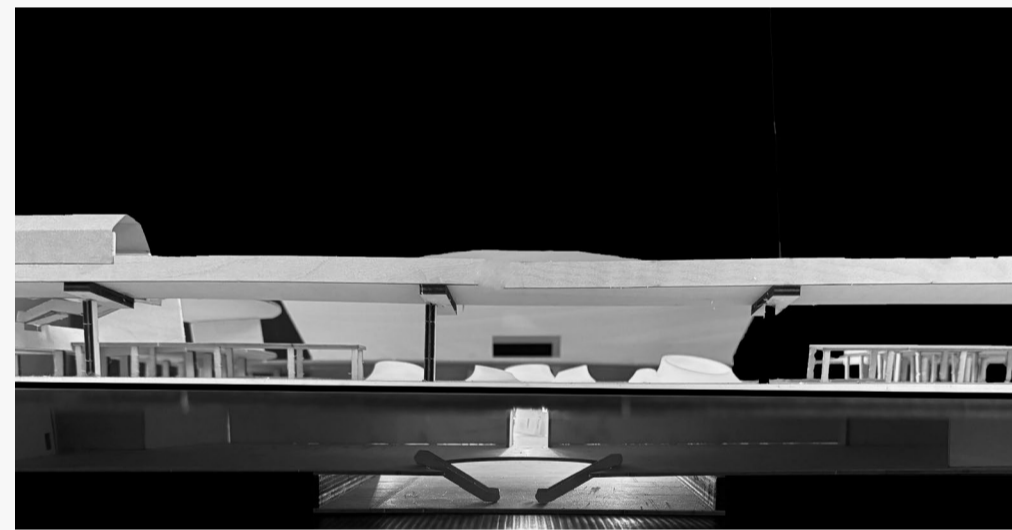


EXPOSE BENEATH THE TRACKS

Revealing Cultural Memory in the Depths of Transit

Project Introduction

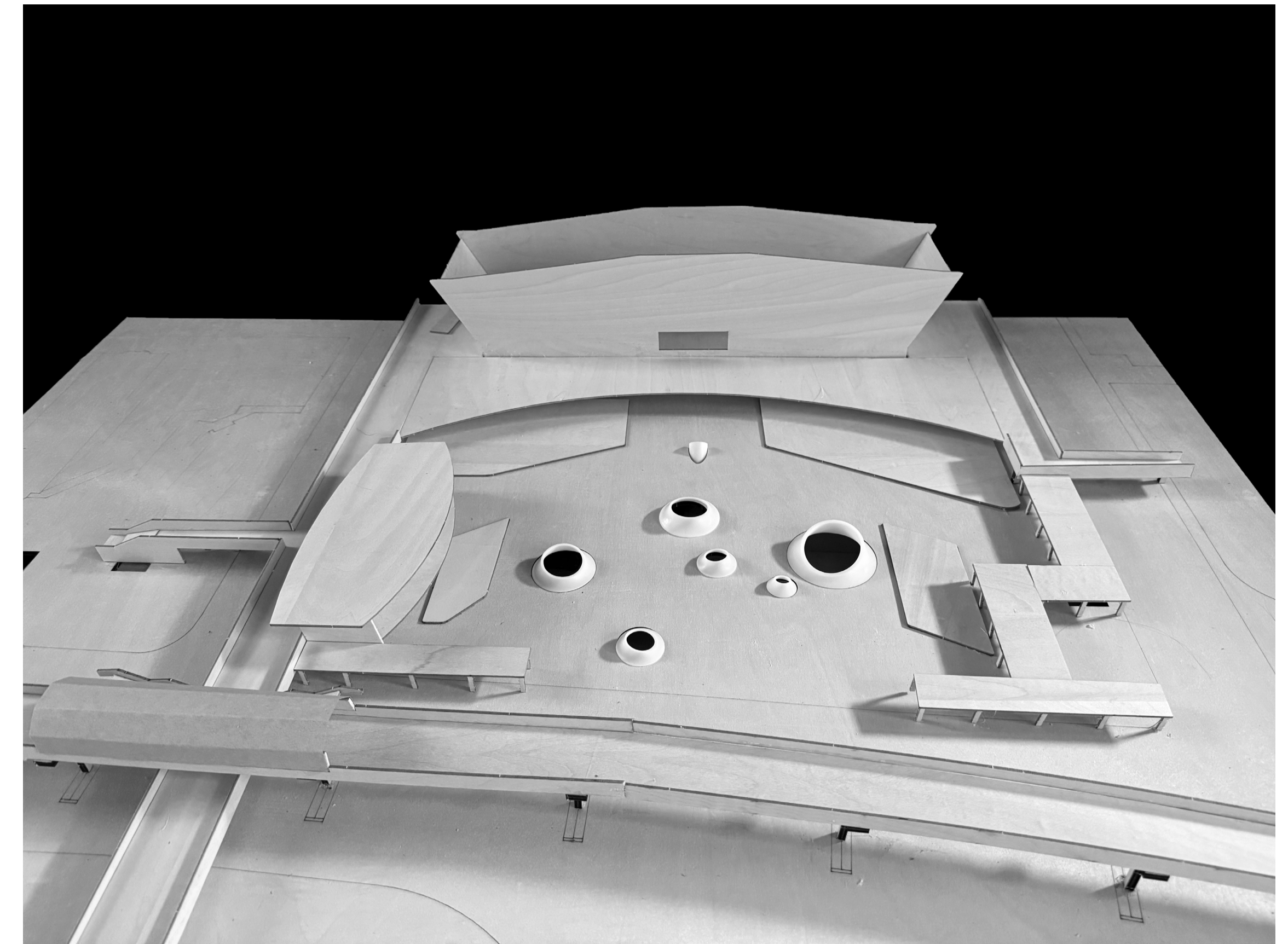
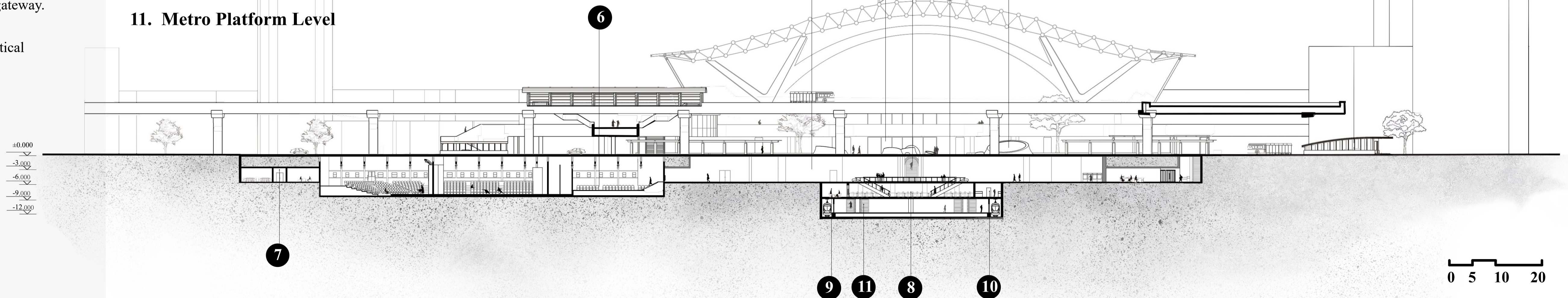
This project reimagines the underused underground level of the railway station as a cultural threshold within the city — transforming spaces of transit into places of memory. Grounded in theories of spatial production and threshold space, the design activates the vertical void beneath the tracks, turning circulation infrastructure into cultural interfaces. As a major urban gateway, the station becomes a point of reentry into the city's identity — inviting both commuters and visitors to reengage with the layered history of mobility, place, and shared memory.



Activating the vertical void beneath the railway station as a spatial narrative and cultural gateway.

Longitudinal Section – Revealing the Vertical Spatial Layers from Street to Platform.

1. Railway Station Exit
2. Main Entrance
3. Skylight
4. Theater Lobby
5. Central Void
6. Theater Auditorium
7. Backstage
8. Linear Corridor / Metro Concourse Hall
9. Shops
10. Exhibition Space
11. Metro Platform Level

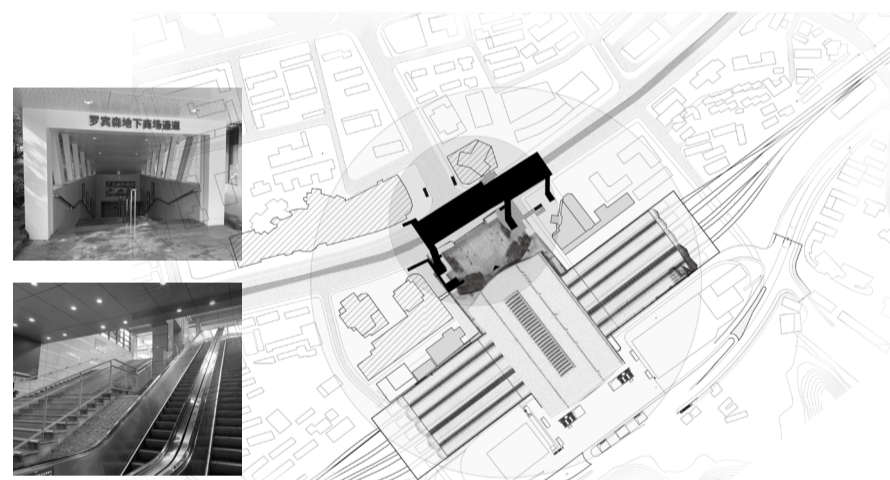
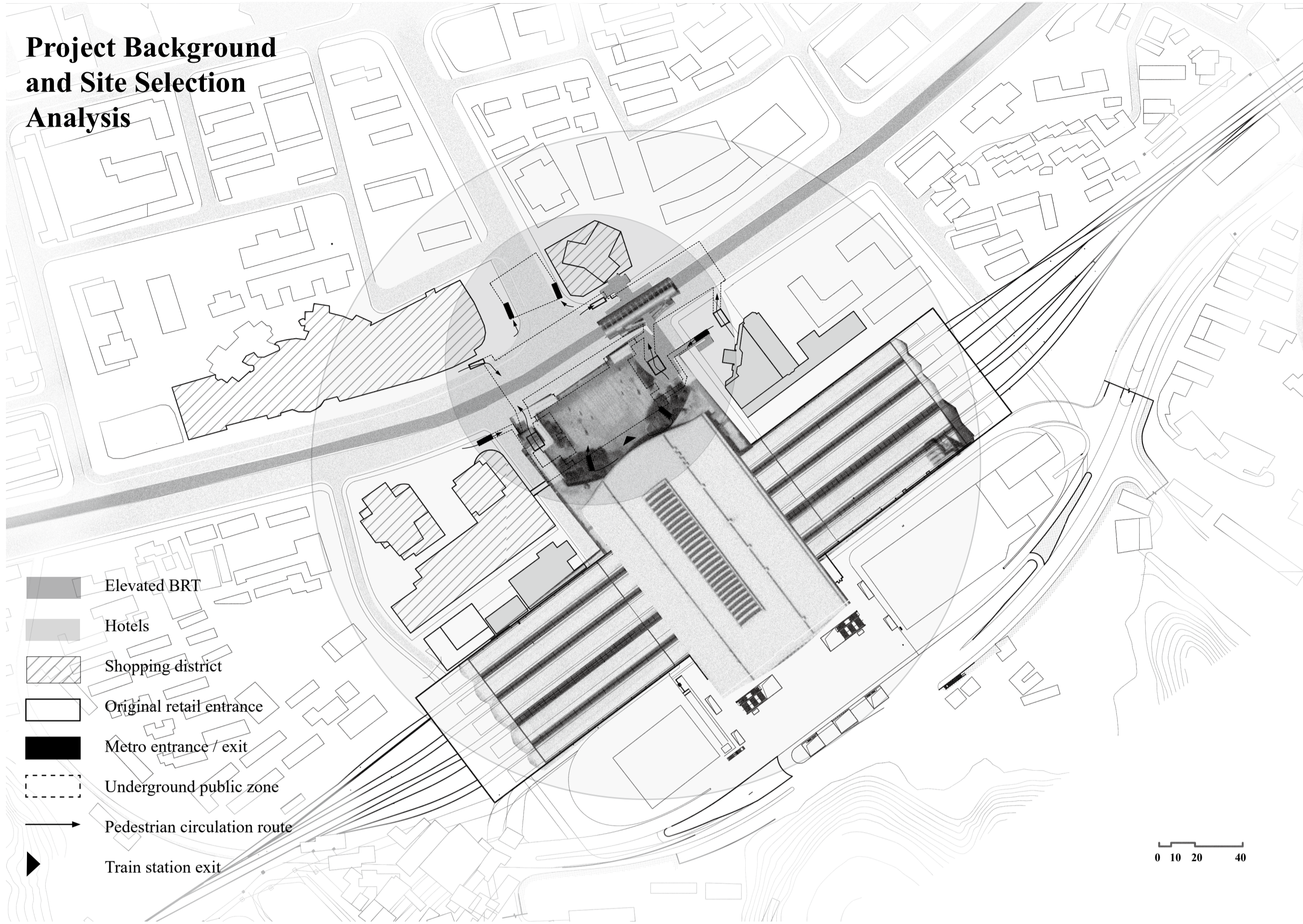


Physical model showing the surface intervention and spatial light wells that reveal underground cultural programs.

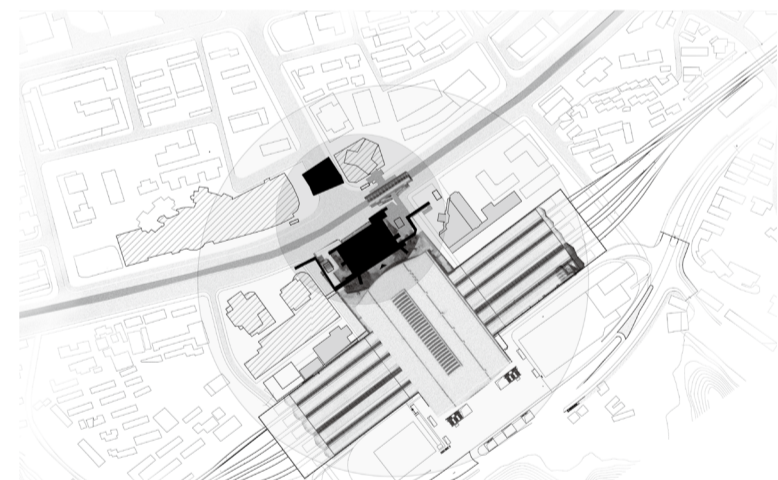
EXPOSE BENEATH THE TRACKS

Revealing Cultural Memory in the Depths of Transit

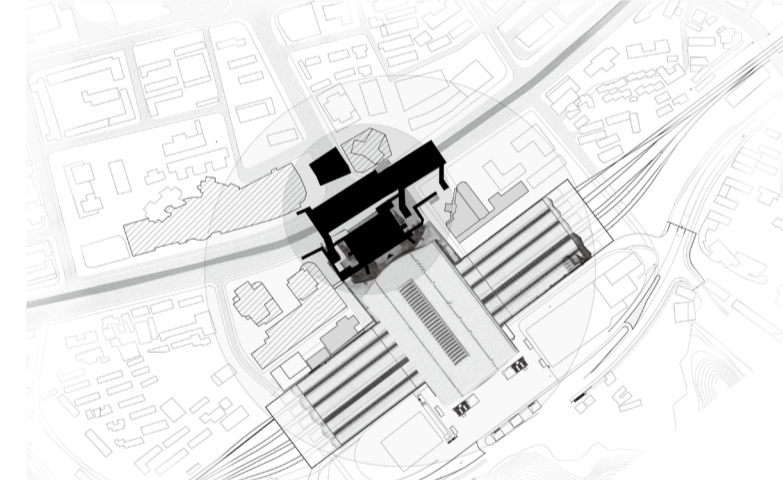
Context and Theory



B1 underground retail zone

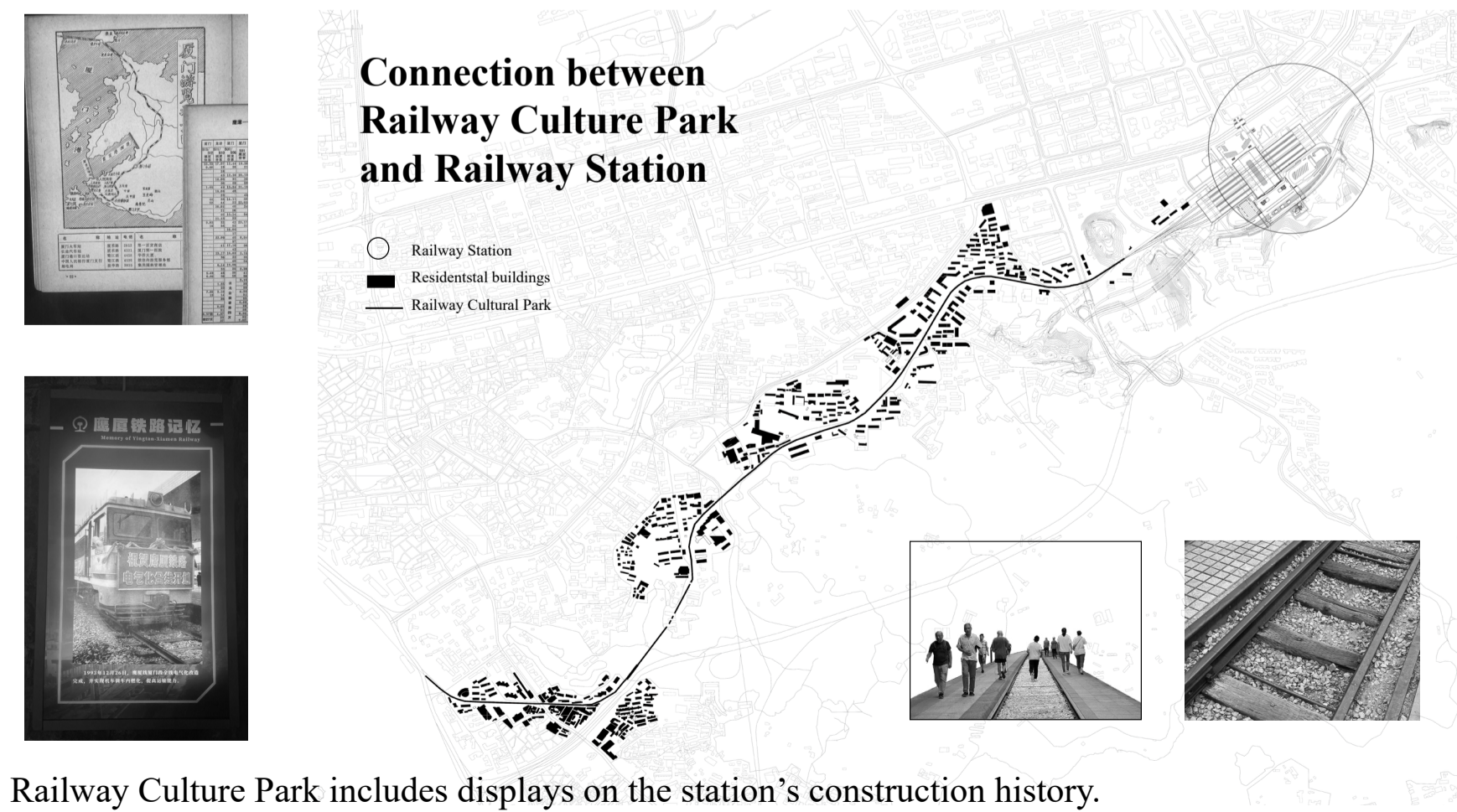


B2 metro concourse



B1-B2 integrated transit and cultural zone

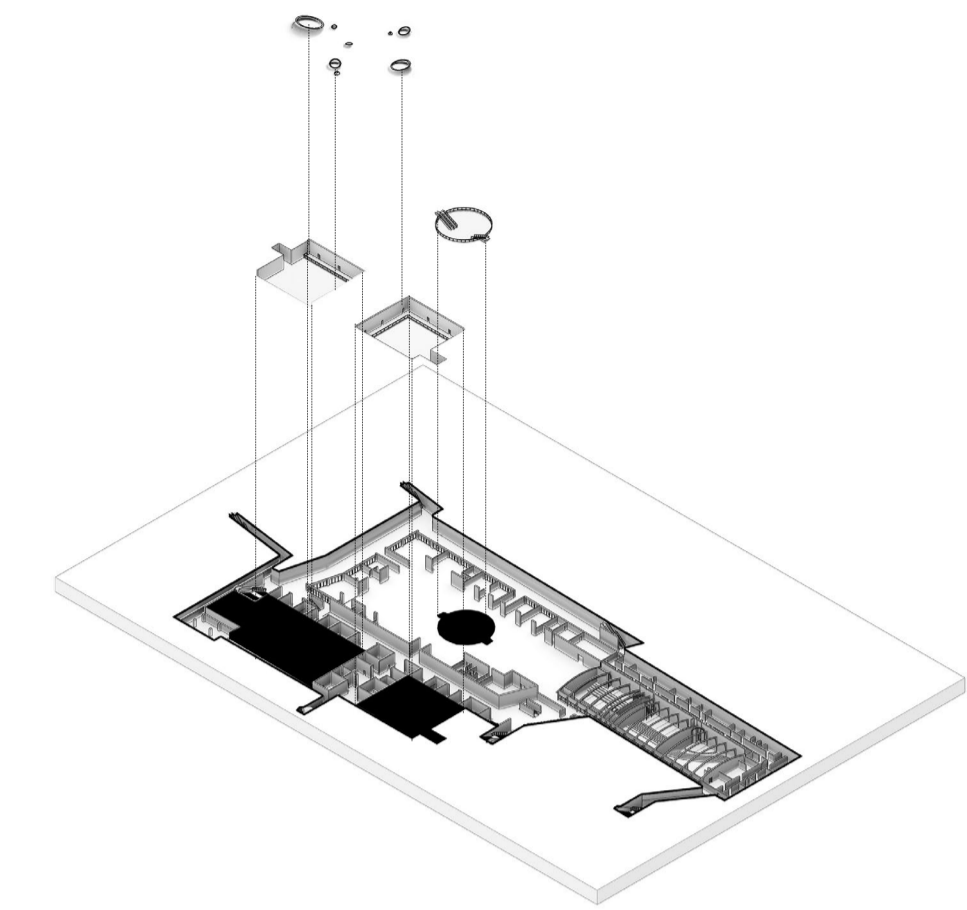
The railway station has become increasingly monofunctional, serving solely as a transit node. Meanwhile, the B1 level—once a bustling commercial zone—now sits largely vacant following widespread shop closures. Despite its adjacency to metro circulation, the site fails to attract or retain pedestrian flow, resulting in an underutilized spatial resource. Situated at the intersection of daily commuter movement and tourist arrival, the site holds great potential as a cultural threshold. Adjacent to the Railway Culture Park, it inherits a deep-rooted railway heritage. Rather than directing visitors outward, the project seeks to internalize this collective memory within the underground station—revitalizing local identity while giving new visibility to the park as a cultural extension.



Theoretical Framework

This project draws upon spatial theory to reinterpret the railway station as a cultural threshold. Grounded in Henri Lefebvre's theory of spatial reproduction, it understands space as socially produced, shaped by power and use. Supplemented by Thirdspace theory and the concepts of Genius Loci and Collective Memory, the design transforms circulation infrastructure into a layered space of cultural immersion, connecting people, place, and history.

From Theory to spatial strategy



EXPOSURE

Supporting Theory

Henri Lefebvre – French philosopher and sociologist
Spatial Reproduction / Social Construction / Cultural Transformation

Guided by Lefebvre's Spatial Production, the skylight redefines transit space as a cultural interface — a vertical cut into the city's memory.

Secondary Theory

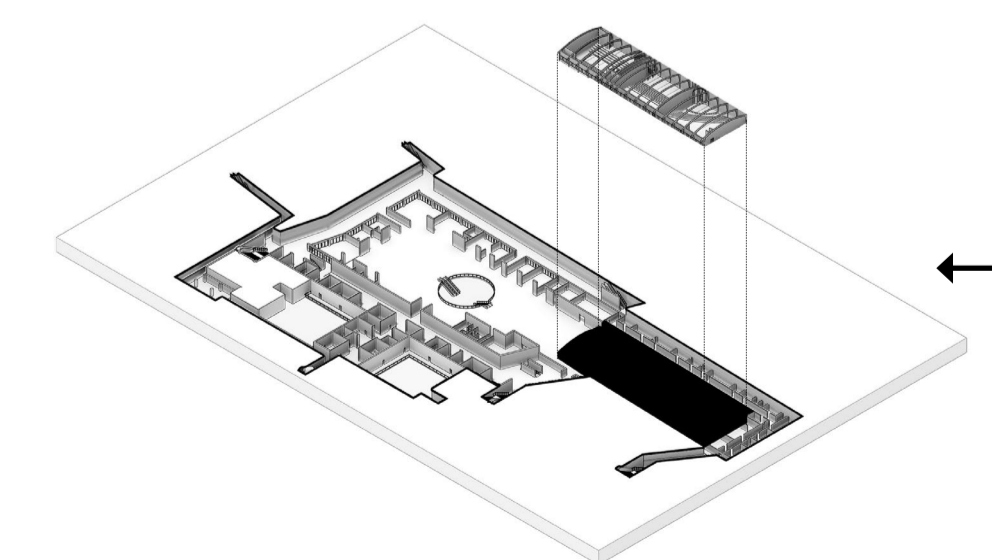
Edward Soja – American urban theorist and geographer
Hybrid Space / Social Intersection / Culture & Everyday Life

Based on Soja's Thirdspace, the B1 corridor overlaps movement with meaning, creating a hybrid space between transit and culture.

EXPLORE

Secondary Theory

Genius Loci - Norberg - Schulz
Collective Memory - Maurice Halbwachs
Historical Narrative / Memory Recall / Urban Identity



EXPERIENCE

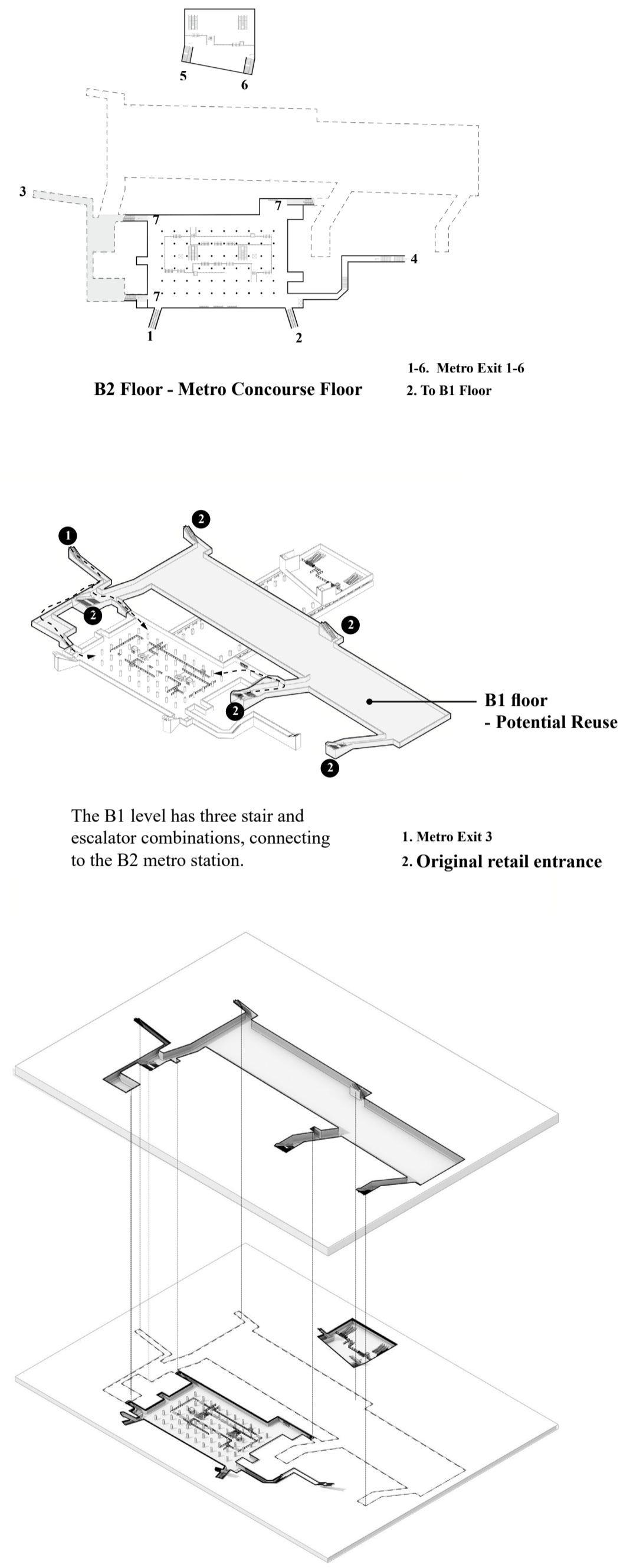
Informed by Collective Memory and Genius Loci, the immersive theater transforms history into spatial narrative, engaging visitors emotionally and spatially.

EXPOSE BENEATH THE TRACKS

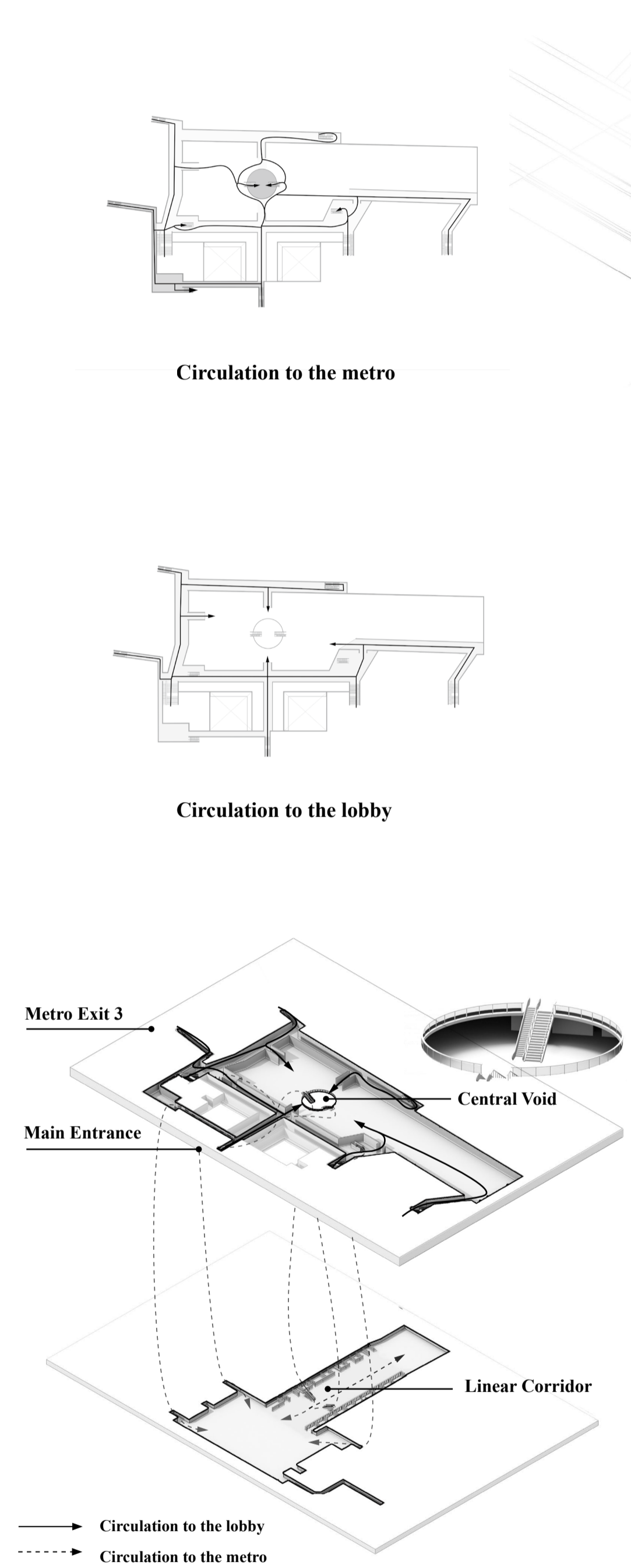
Revealing Cultural Memory in the Depths of Transit

Entrance Strategy

Before



After

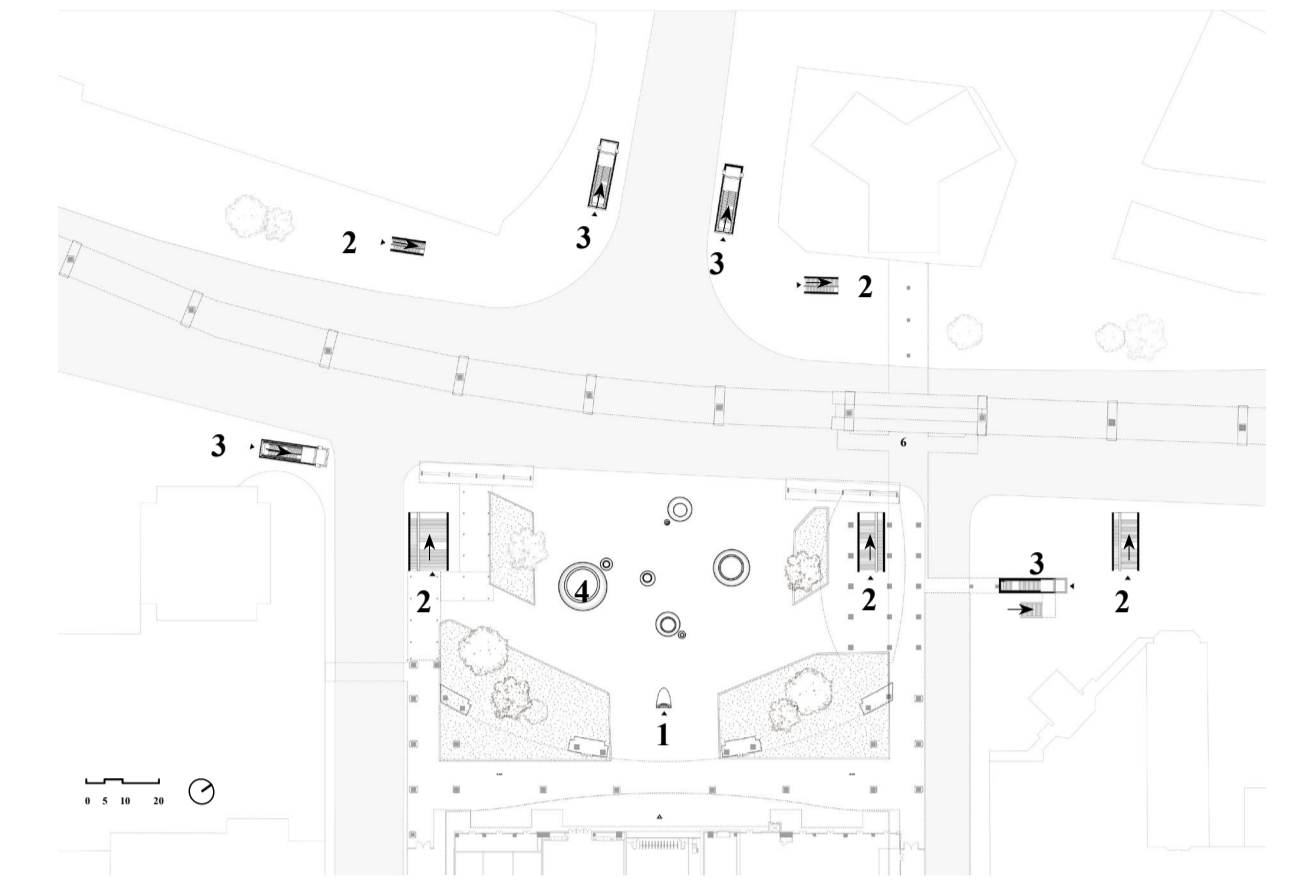


From Flow to Encounter: Reprogramming B1 for Cultural Engagement

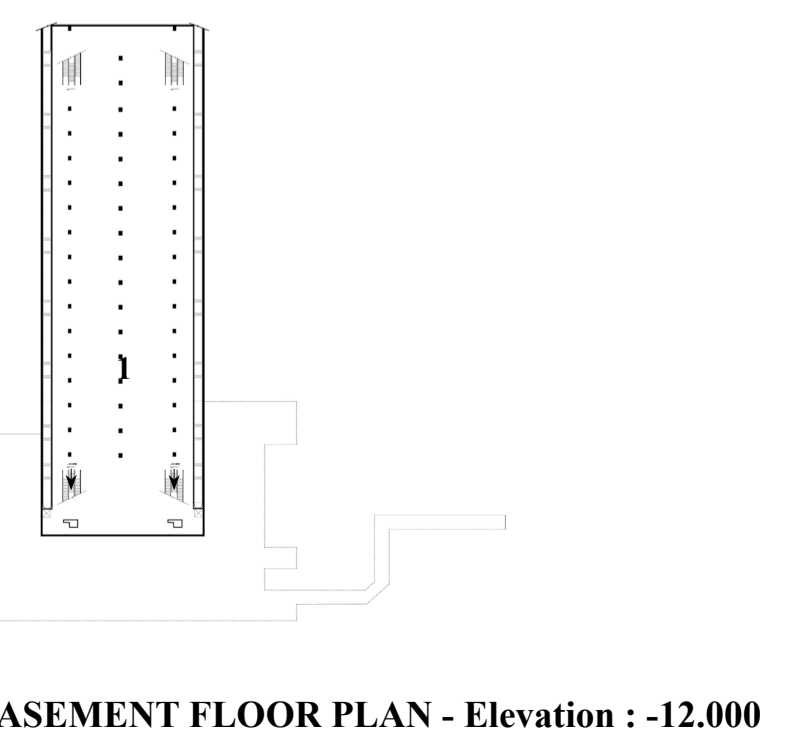
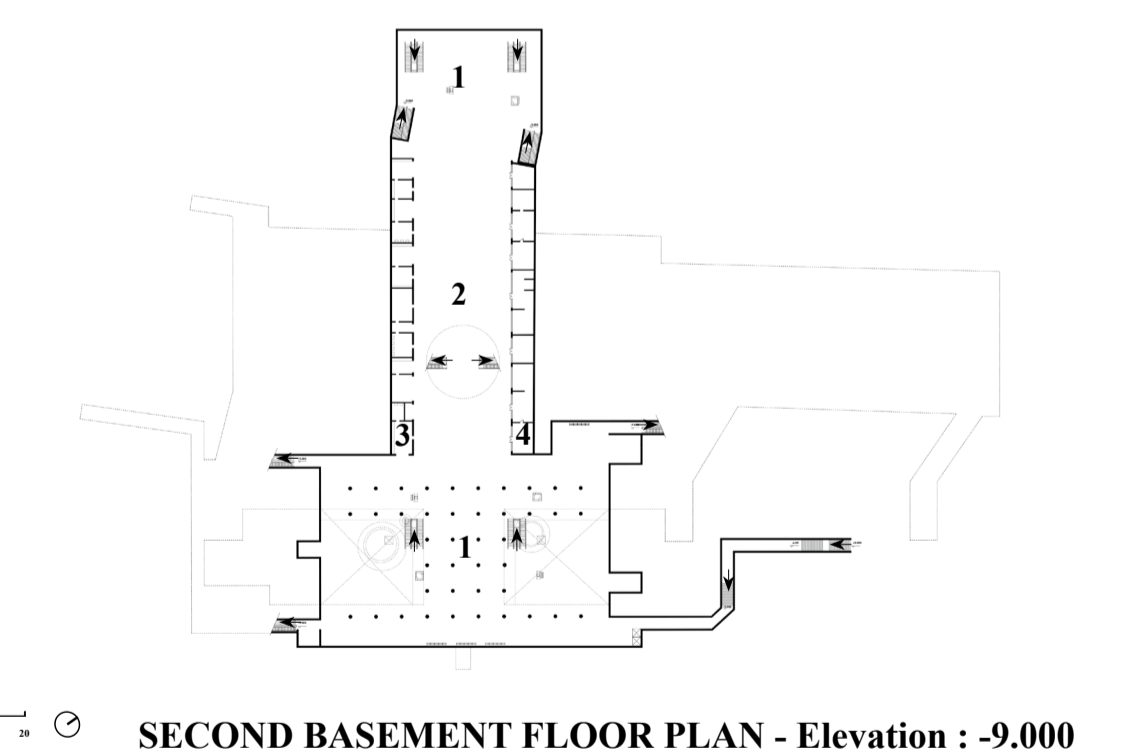
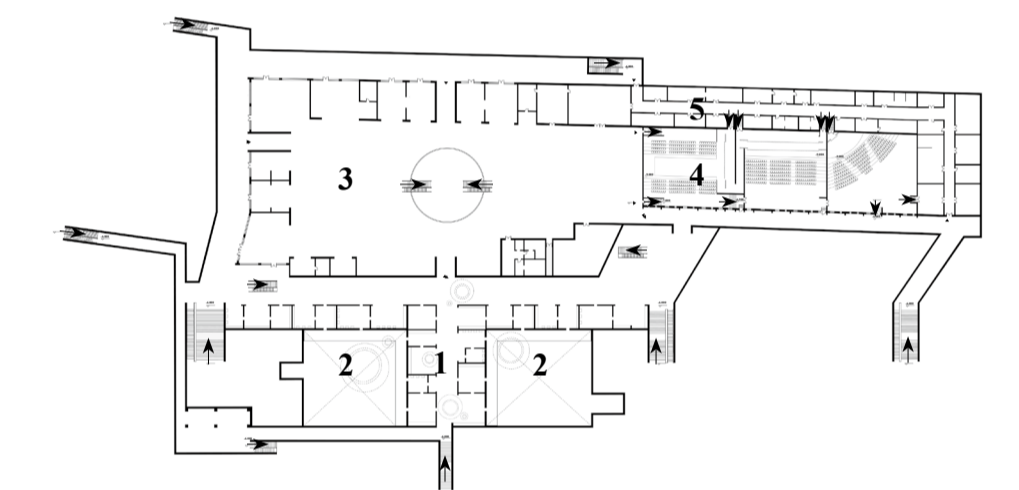
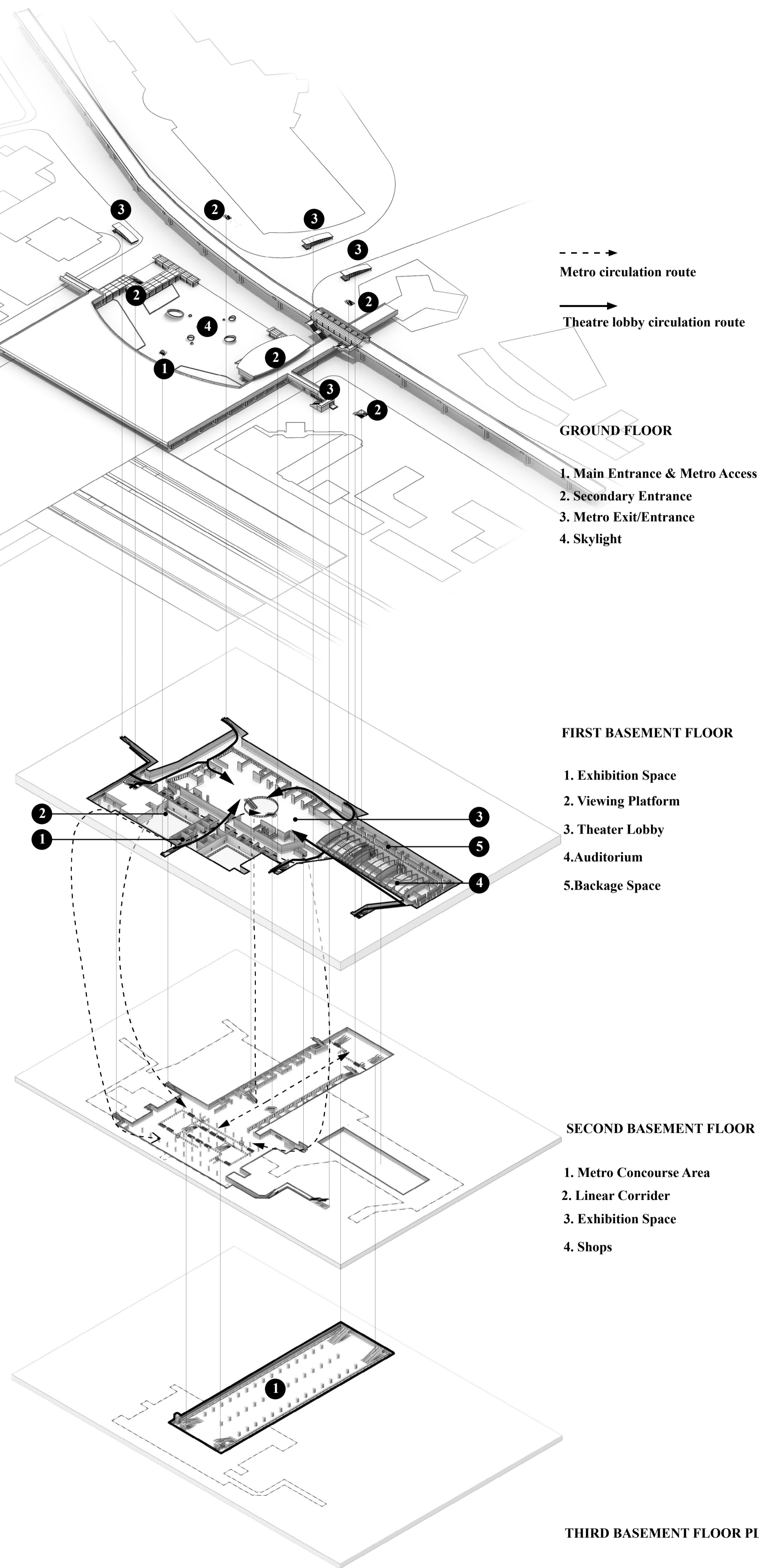
The B1 commercial zone, once vibrant, now sits largely vacant due to widespread store closures. Yet its direct integration with the metro system presents untapped potential for spatial and cultural renewal. By reconfiguring access and circulation, the design transforms B1 into a cultural infrastructure node embedded within urban flow. Five original entrances are retained, one new entrance aligned with Metro Exit 3 is added, and two redundant exits are removed—simplifying movement and drawing commuters into the site. A new central void with symmetrical stairs and escalators enhances orientation, creates a key gathering point, and forms a strong vertical link to the metro concourse below. Beneath the void, a linear corridor connects previously disjointed station halls—bridging Exits 1-4 with 5-6. Exhibition and retail spaces along this route activate the environment and enable vertical two-way flow. The design turns passive foot traffic into cultural participation, making B1 a place of encounter rather than mere transit.

Spatial Strategy and Vertical Sequence

Project Floor Plans



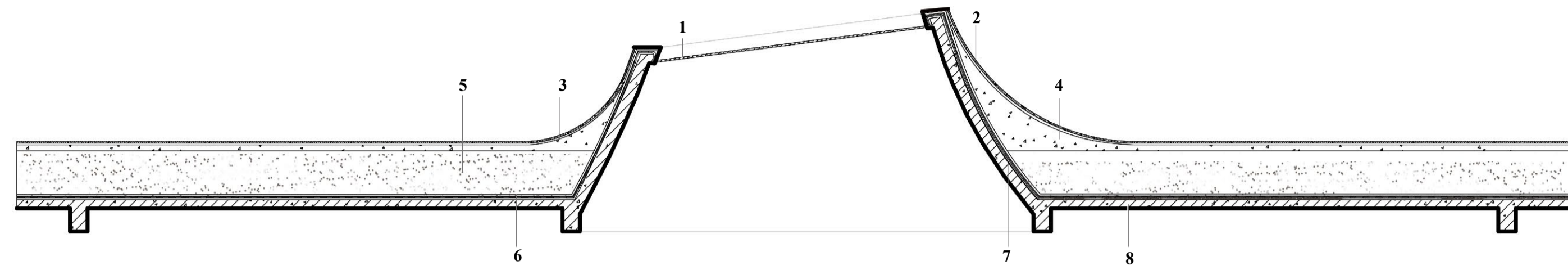
GROUND FLOOR PLAN - Elevation : ±0.000



EXPOSE BENEATH THE TRACKS

Revealing Cultural Memory in the Depths of Transit

Expose - Light as Memory Trigger

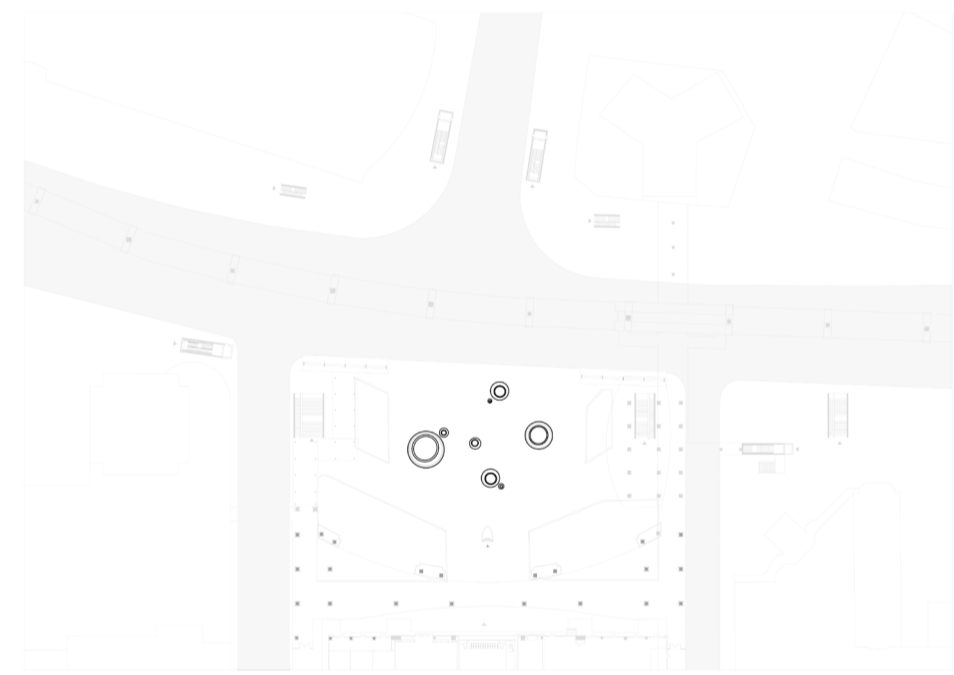


1. UV-resistant laminated glass
2. Landscape surface paving
3. cement mortar bonding layer
4. thick concrete leveling layer
5. Soil covering layer
6. 1:3 cement gravel infill insulation layer
7. Waterproof membrane
8. Reinforced concrete structural layer

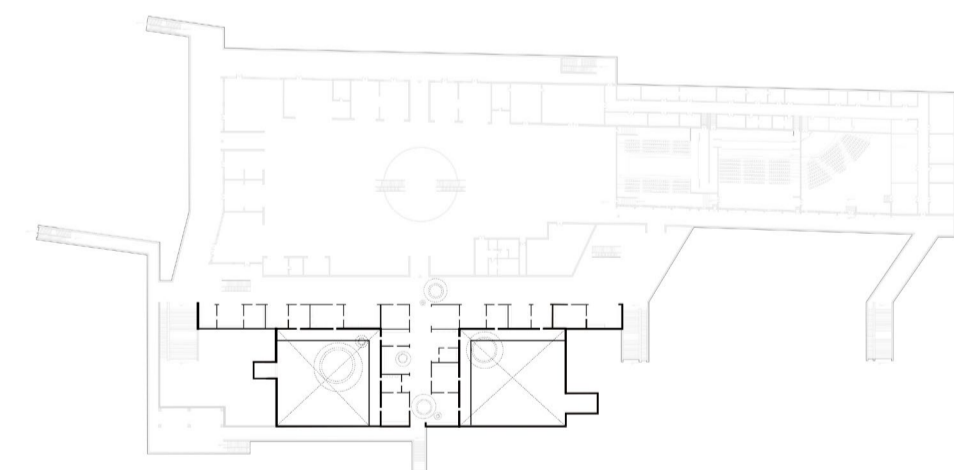
The skylight integrates laminated UV-resistant glass with anti-glare coating, ensuring soft, diffused daylight for the exhibition space below. A curved concrete dome supports the structure while directing rainwater away. Insulation and suspended ceiling layers complete the build-up, enabling both visual connection and environmental control between plaza and underground space.

Skylight as Spatial Anchor

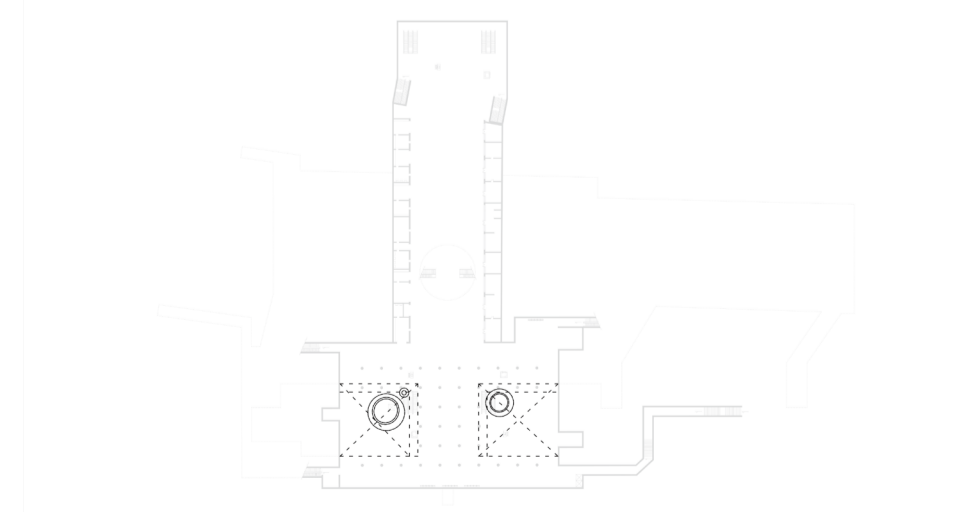
Above the viewing platform, large circular skylights opens like a quiet seam of light, guiding daylight gently into the underground. Looking up, one glimpses the rhythm of the city above; looking down, a hidden cultural realm unfolds below. This beam becomes both orientation and invitation—drawing curiosity, slowing footsteps, and inspiring pause. Between brightness and shadow, a once-forgotten level is awakened, transforming into a moment of encounter, where ground and underground meet in a silent dialogue of gaze and memory.



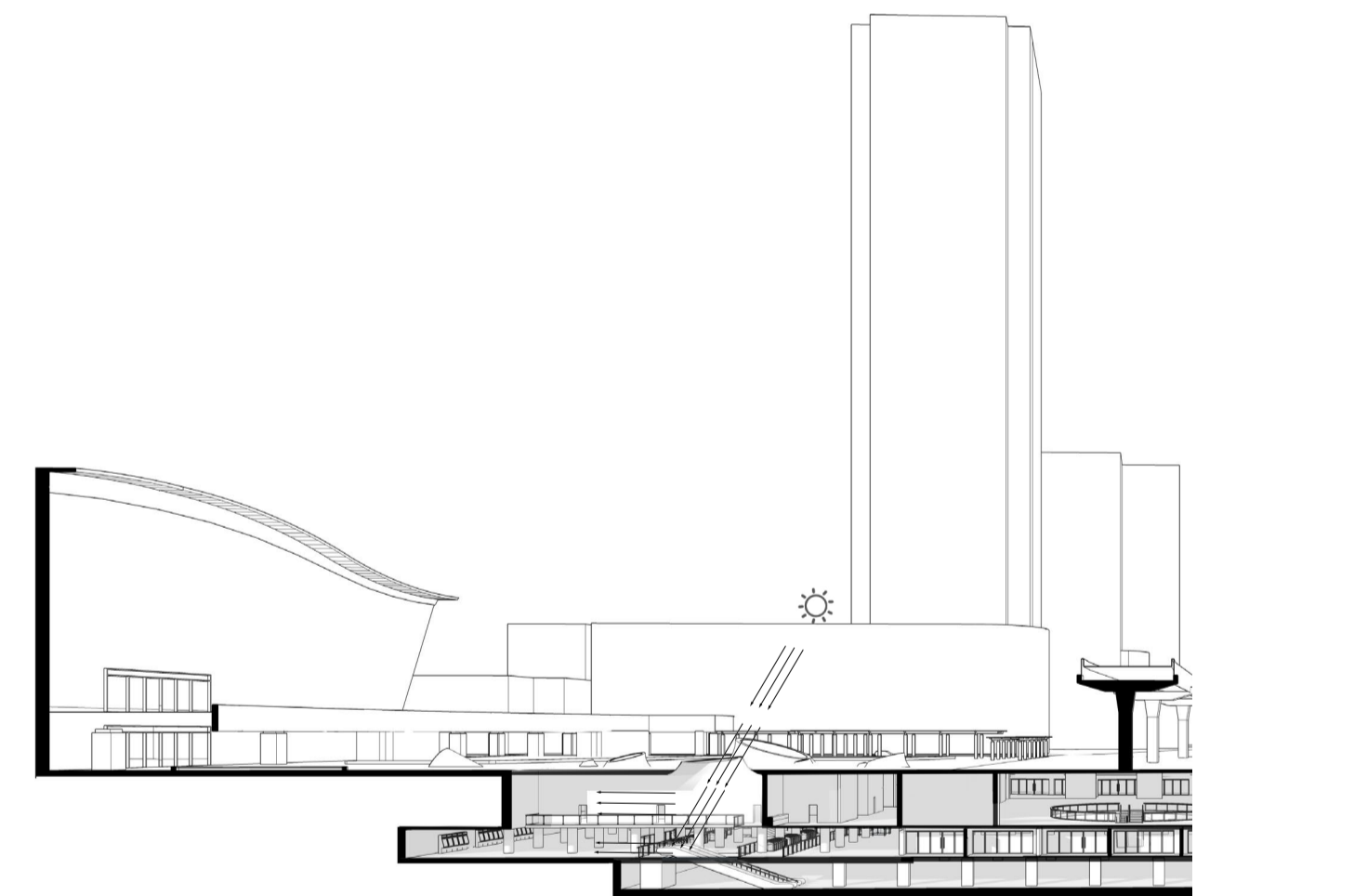
Ground floor



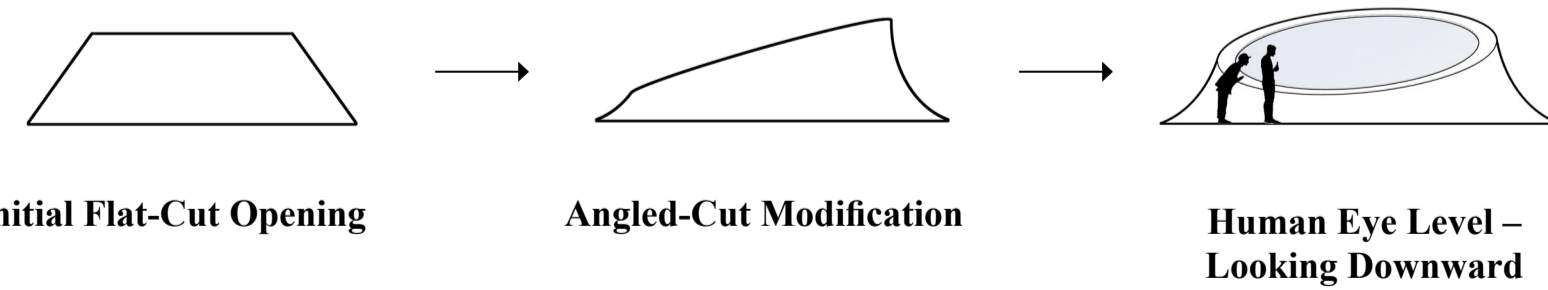
B1 floor



B2 floor



daylight



Vertical Light Connection Across Layers

The viewing platform skylight penetrates from the ground floor through B1 to the B2 metro level. Natural light reaches both the sunken exhibition area and the metro concourse, enabling visual interaction and spatial continuity between city life above and cultural activity below.



EXPOSE BENEATH THE TRACKS

Revealing Cultural Memory in the Depths of Transit

Explore Through Memory

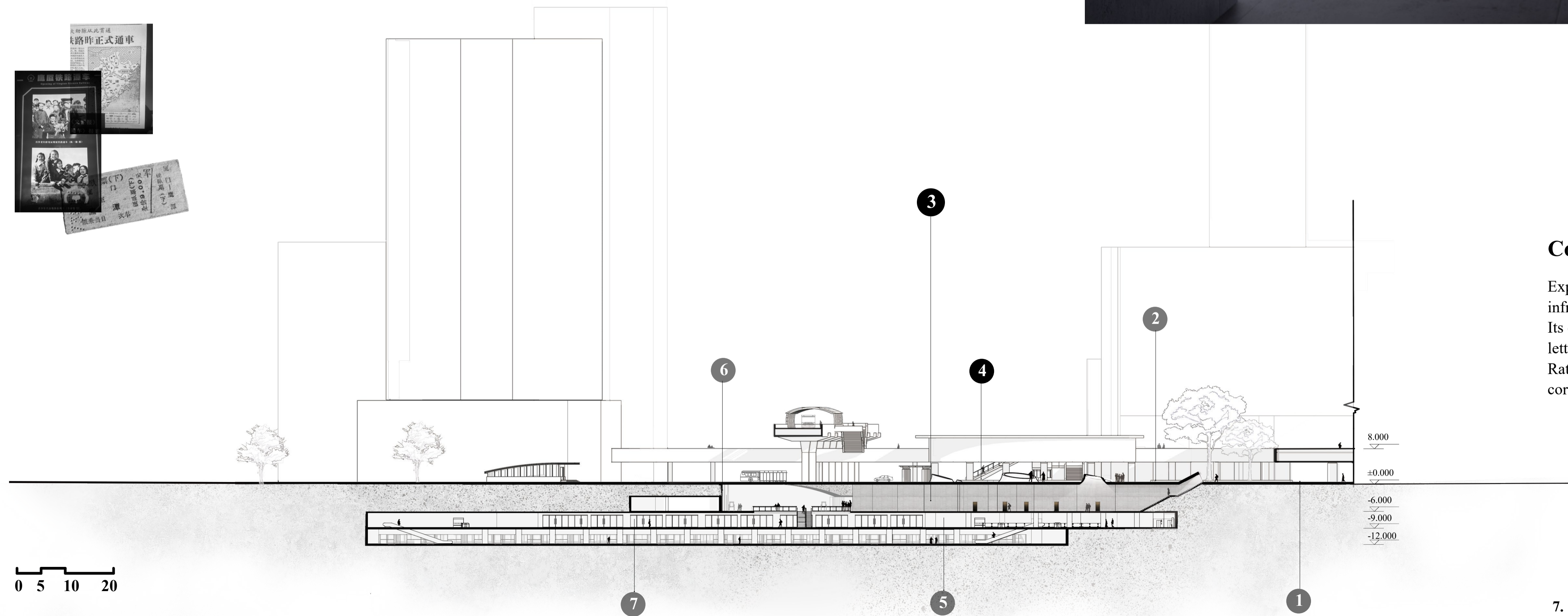
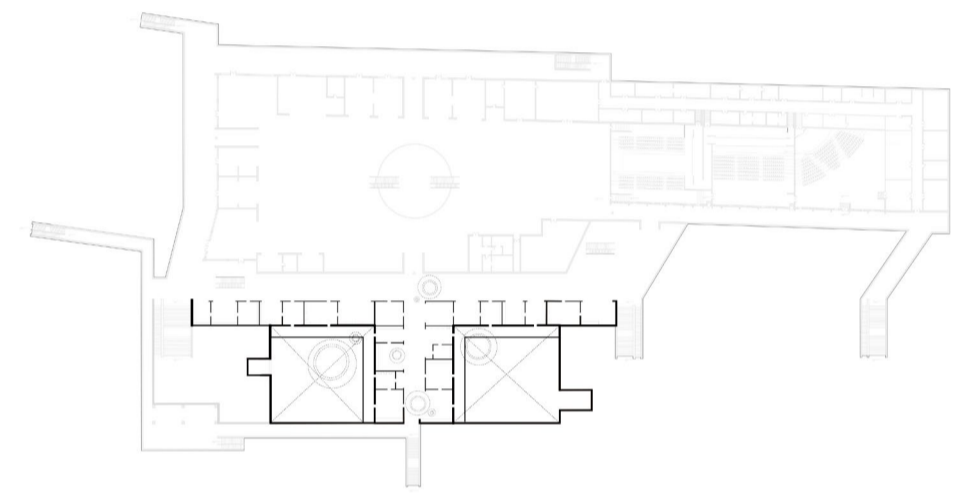
Revealing Memory Through Movement

The exhibition corridor turns transit into exploration. A sequence of doorways leads visitors through layered spatial thresholds—some opening into quiet archival niches, others unexpectedly revealing the viewing platform above. This choreography of enclosure and exposure evokes a rhythm of discovery. Memory is not displayed all at once, but revealed step by step, inviting visitors to navigate, connect, and feel. The corridor thus becomes a narrative device—immersing the body in a temporal journey through light, shadow, and history.



Light Without Harm – A Skylight of Revelation

The skylight is placed above circulation paths rather than exhibition areas, avoiding direct exposure to sensitive artifacts. Constructed with low-iron, UV-filtering laminated glass, it delivers diffused and safe daylight. More than illumination, the skylight reveals — forging a silent dialogue between surface and depth, past and presence.



Concrete as Carrier of Industrial Memory

Exposed concrete is chosen as the primary interior material to echo the unfinished, infrastructural texture of the railway station's history. Its cold, silent surfaces serve as a muted backdrop, allowing archival elements—letters, photographs, and documents—to emerge in quiet clarity. Rather than dominating the space, the material withdraws into stillness, turning the corridor itself into a vessel for memory and reflection.

- 4. Skylights
- 5. Metro Concourse Area
- 6. Auditorium
- 7. Linear Corridor
- 1. Railway Station Exit
- 2. Main Entrance
- 3. Exhibition Space

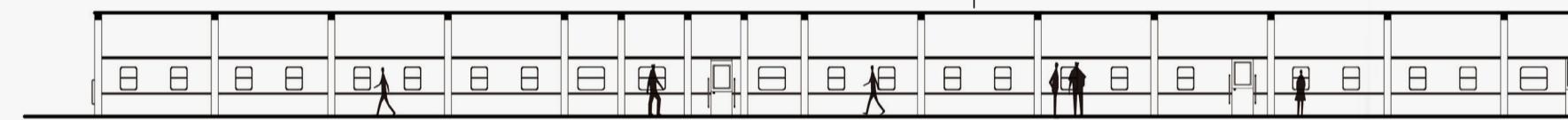
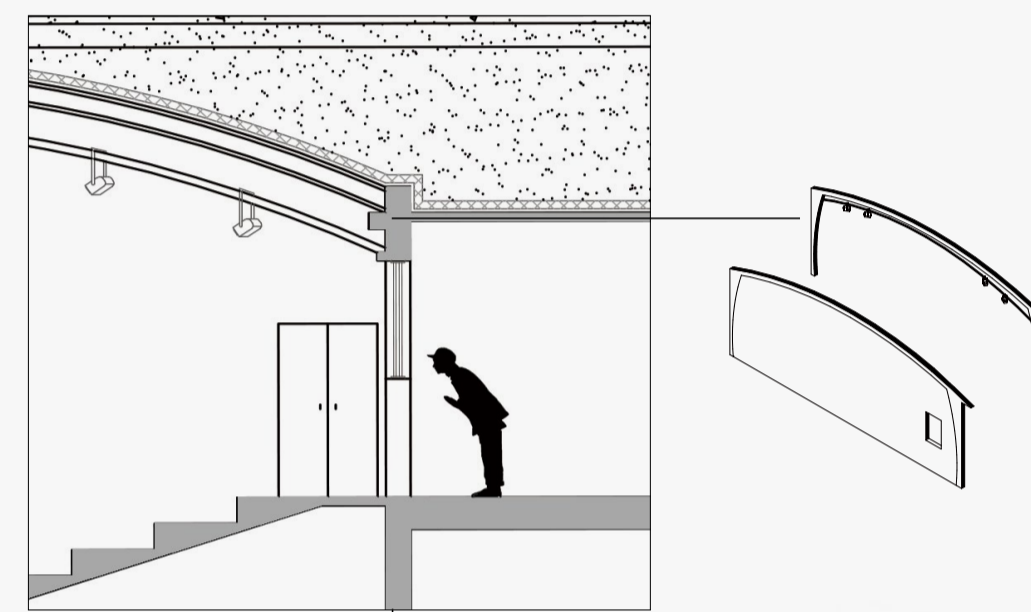
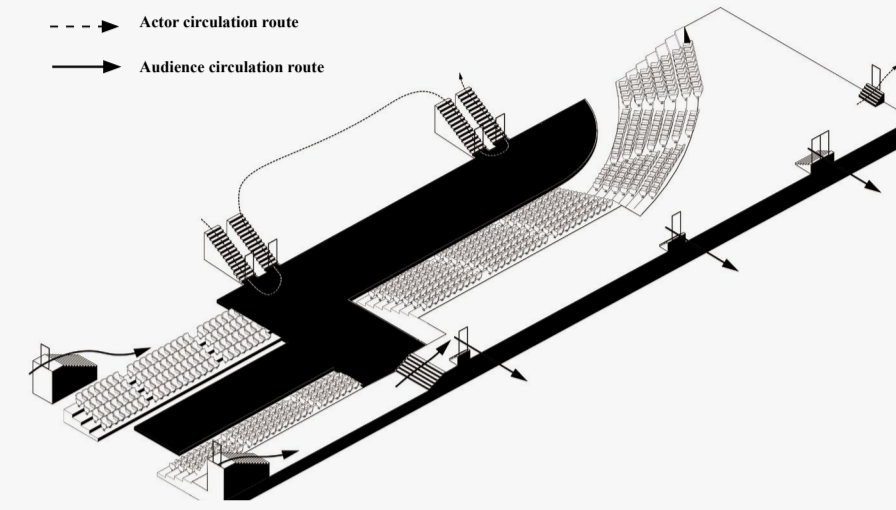
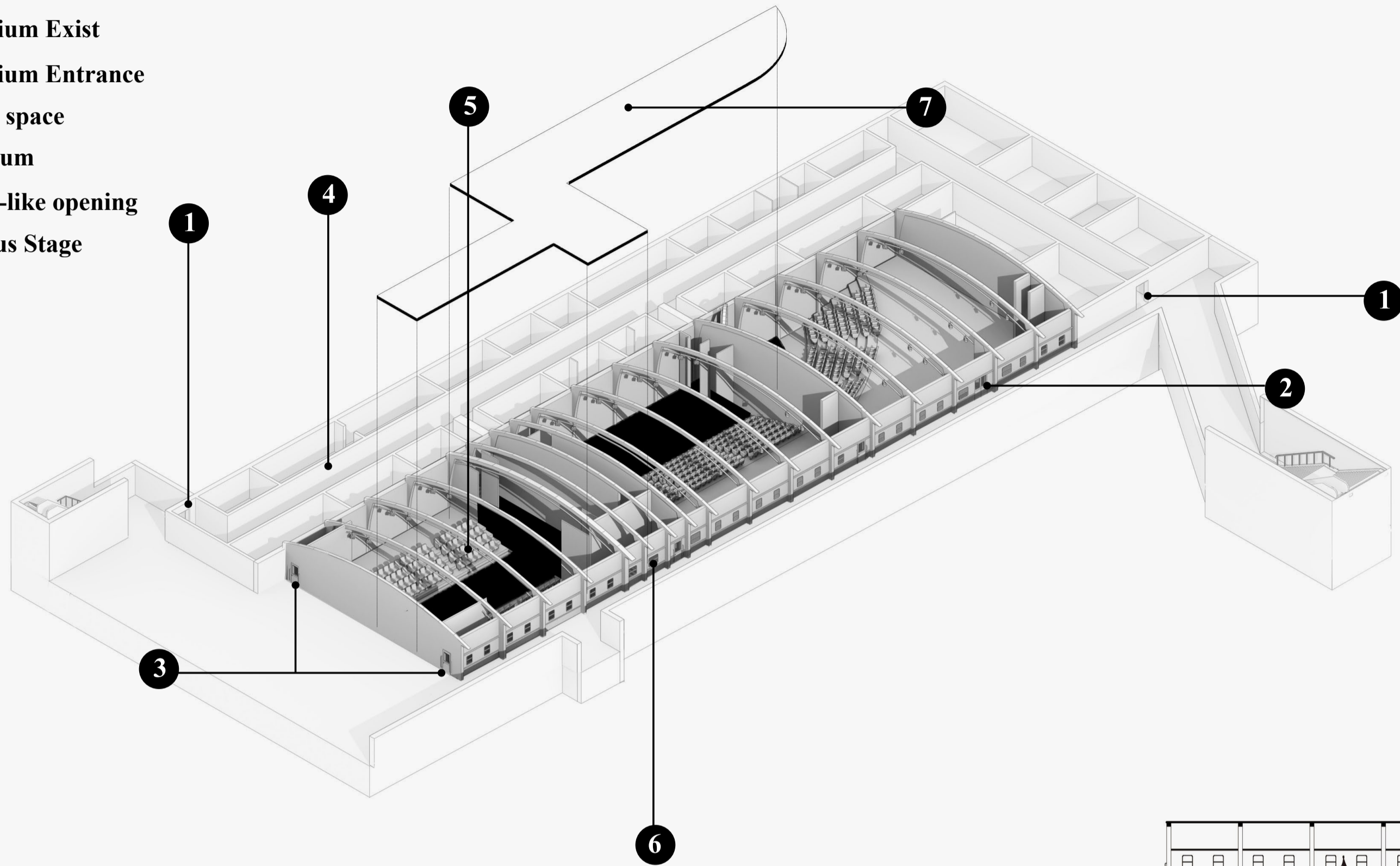
0 5 10 20

EXPOSE BENEATH THE TRACKS

Revealing Cultural Memory in the Depths of Transit

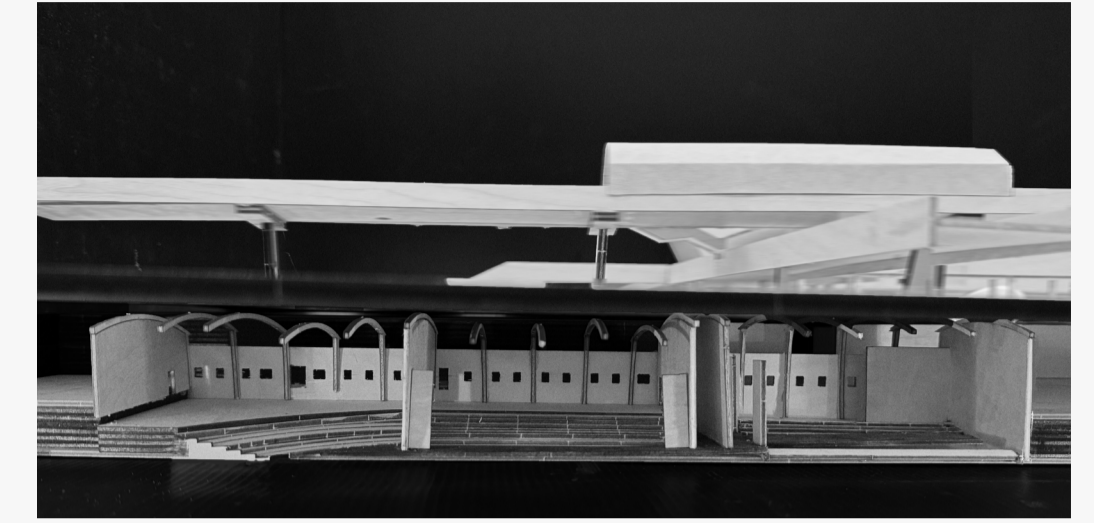
Experience as Journey

1. Staff/Actor Access
2. Auditorium Exist
3. Auditorium Entrance
4. Backstage space
5. Auditorium
6. Window-like opening
7. Continuous Stage



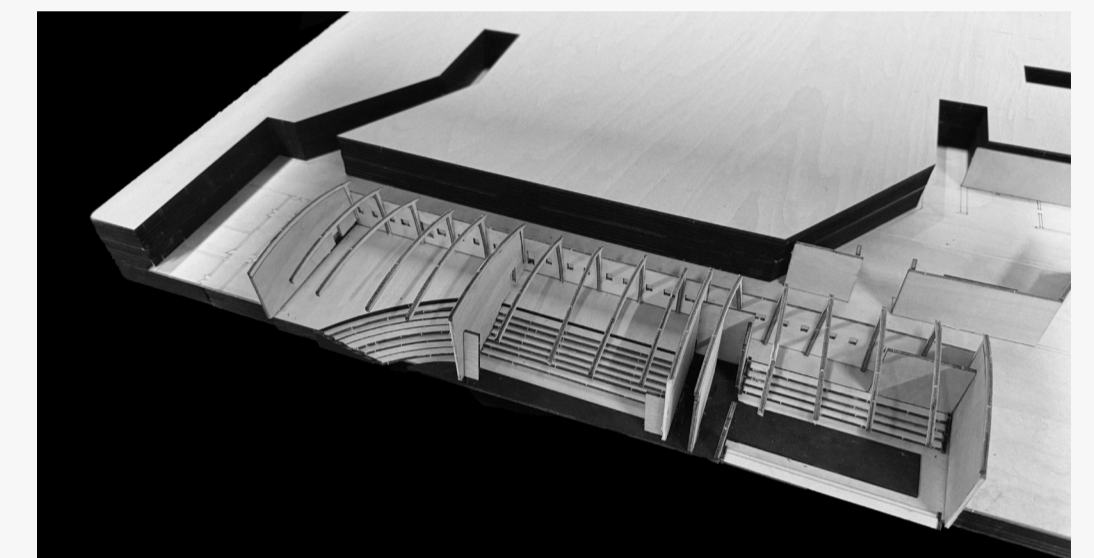
Spatial Rhythm and Circulation

The diagram reveals the height variation among the three immersive theaters, resulting from their differing internal layouts. This elevation shift enriches the spatial rhythm of the overall experience.



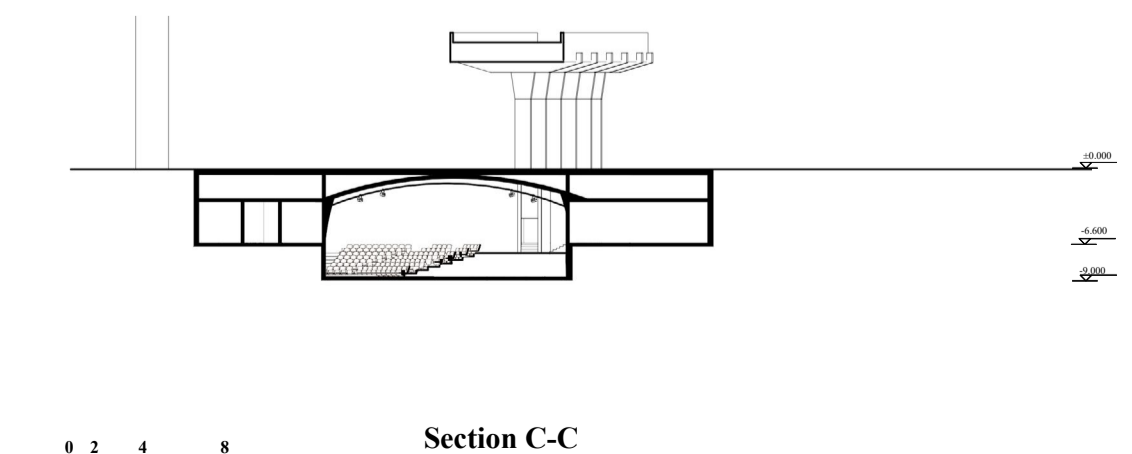
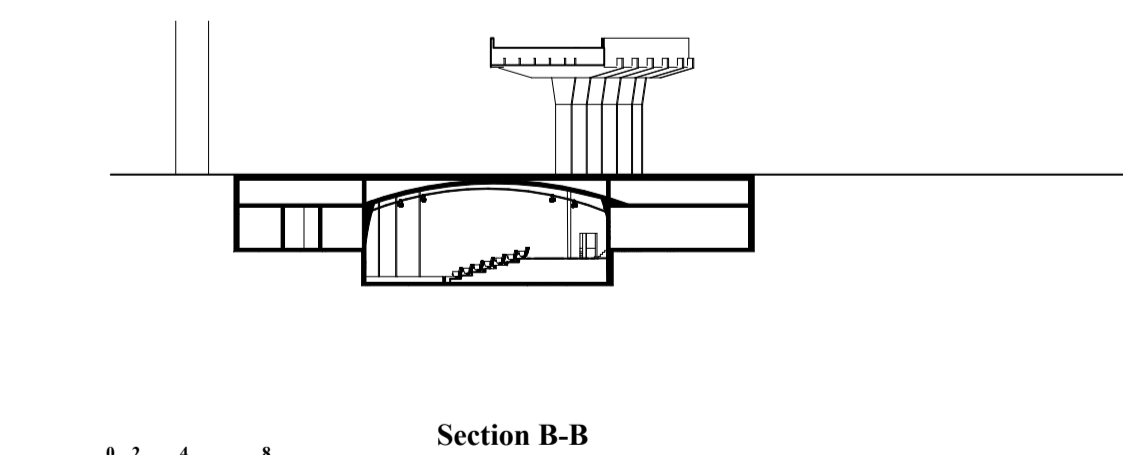
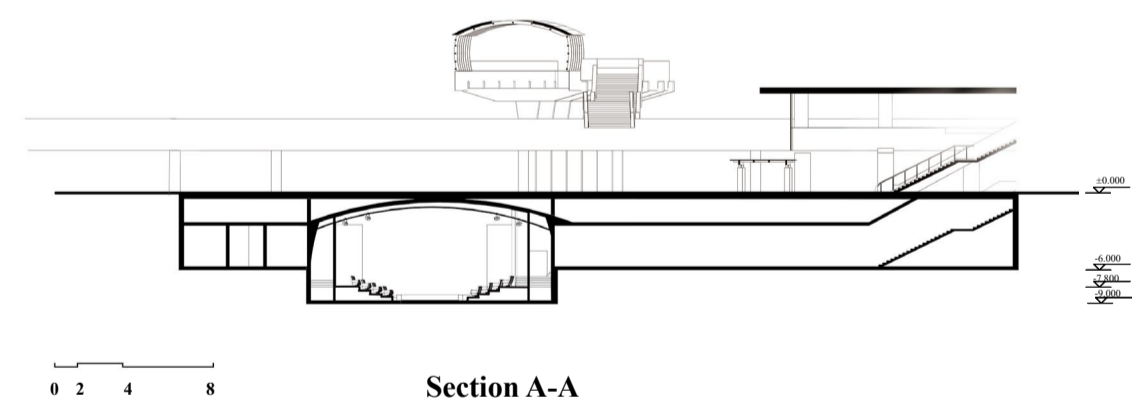
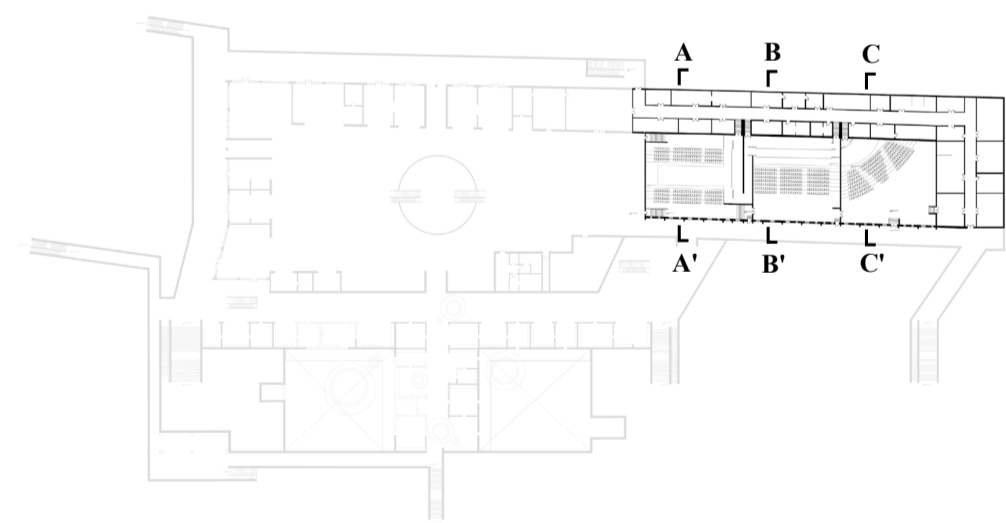
Arched Steel Frame

Inspired by the curved profile of train carriages, the arched steel frame serves a dual purpose: structurally supporting the curved theater walls and acting as a lighting rig for performances.



Glimpses Through Windows

Window-like openings along the corridor allow partial views into the theaters, teasing the unfolding narrative. These controlled glimpses enrich spatial storytelling, encouraging curiosity and active engagement—just like peering through a train window into passing moments of history.



Immersive Theaters as Narrative Carriages

Inspired by the rhythm of train carriages, the final spatial sequence is composed of three immersive theaters connected as one continuous stage. Each presents a scene from the history of the Yingtan–Xiamen Railway—different characters, stories, and atmospheres unfold as visitors move through, echoing the feeling of walking through a moving train and gradually entering its historical memory. The sequence is unified through both spatial structure and circulation, forming a continuous theatrical experience.

